

# Port Austin

Port Austin can be a tricky place to navigate and anyone going out without first knowing what to look for could get in trouble fast.

To get to Port Austin you simply follow 53 North into Port Austin. At the very end of 53 is a stoplight, continue on through the stoplight and the marina entrance is on your left. Fig: 1

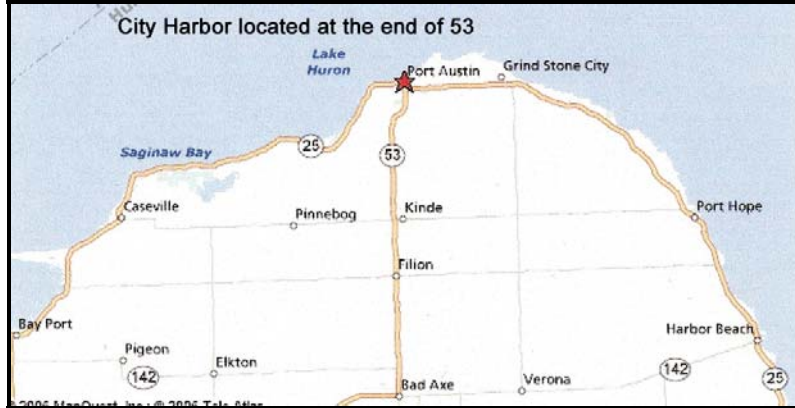


Fig: 1

The City Boat Ramp is located in the marina parking lot with plenty of parking. Figure 2 shows the chart of Port Austin Harbor. There are transient docks (limited) as well as seasonal. The red nuns (buoys) located on the west side of the harbor next to the docks mark shallow water on the other side of them. Keep the red nuns to your right when coming into this area if your slip is on the west side of the dock. The boat docks are the permanent type (non-floating) and with low water levels, there's about a 3 foot clearance between the dock and the top of your gunnels.

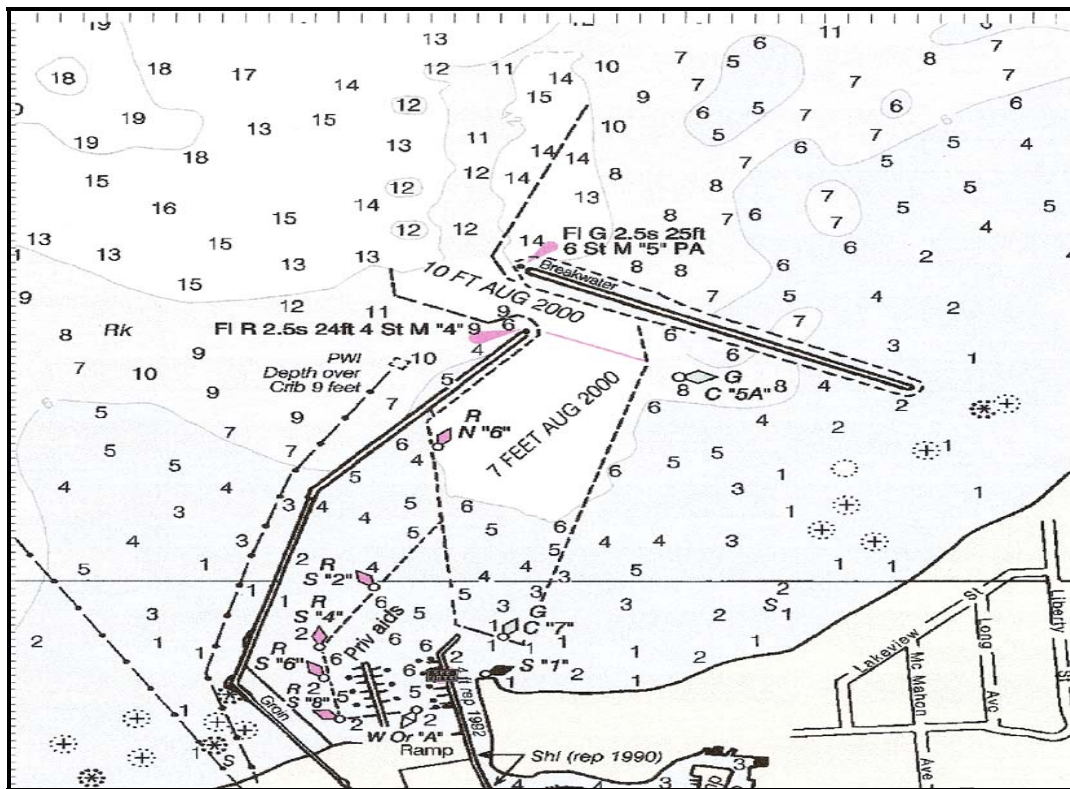


Fig:2

